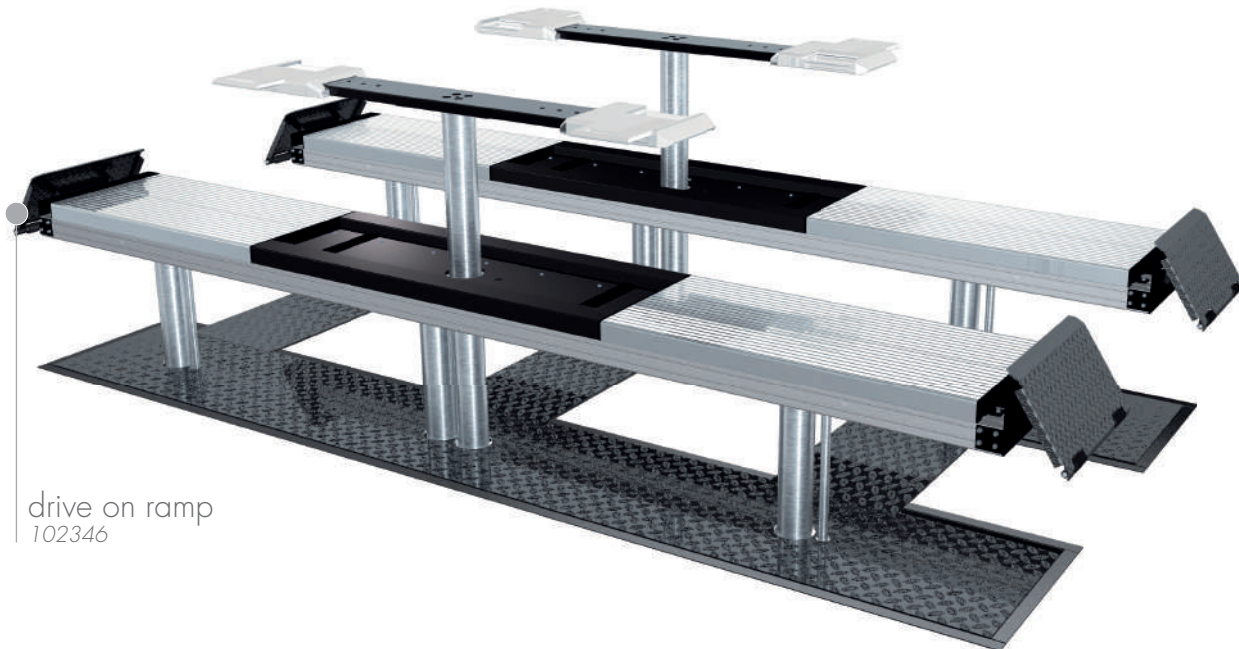
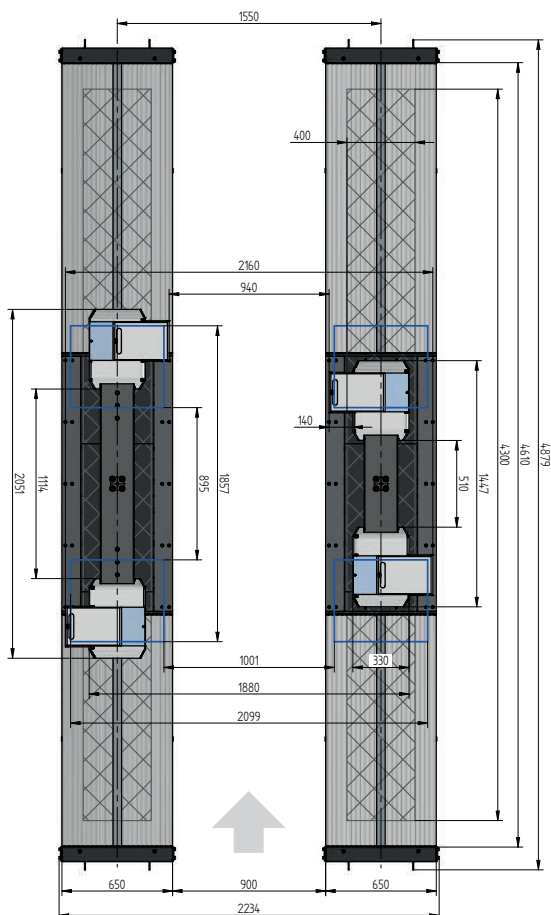




# Alu Track 4.40/2.35



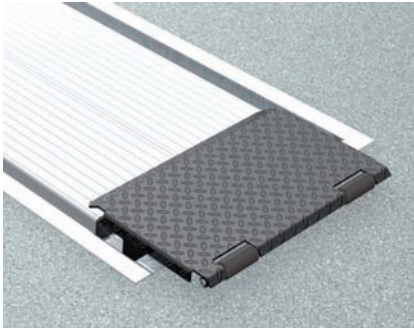
drive on ramp  
102346



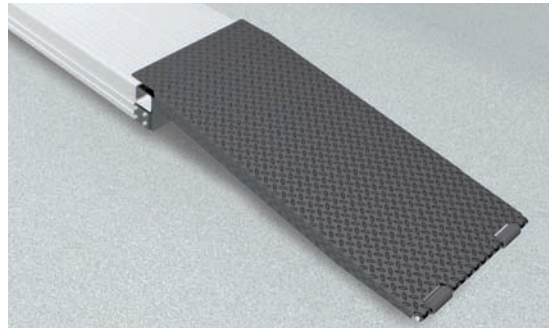
## TECHNICAL DATA

capacity	4000 kg
whell free lift	3500 kg
effective raise height platform	1997 mm
lifting height wheel free unit	1982 mm
platform length	4800 mm
platform height	180 mm
drive over height wheel free unit	20 mm
piston diameter	123 mm
piston distance	1550 mm
installation depth	2443
motor output	
power connector	
cable length to control	
lifting time	
lowering time	

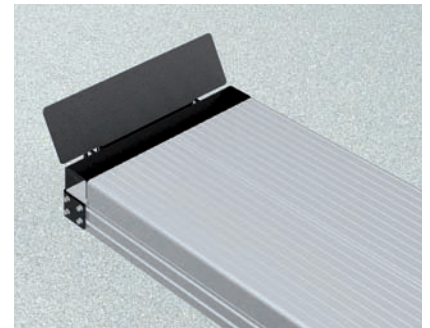
Platform support Alu Track 4.40 /2.35	108615
Support Uni 2.35 plus	102640
Installation cassettes STEEL 1550 mm 6-pt.	2430XX
Installation cassettes STEEL 1550 mm galvanized 6-pt.	2431XX
Lifting unit oil 4,0 l/3,5t 1550 mm - K pre-assembled in installation cassette	108366
Lifting unit oil 4,0 l/3,5t 1550 mm - H packed in wooden box	108616



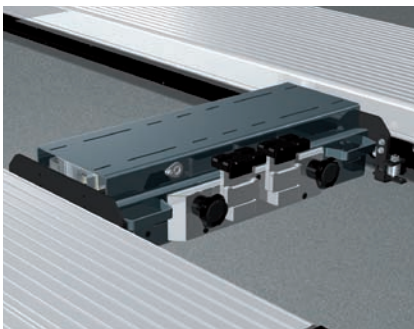
Drive on ramp  
for installation flush with floor level  
102346



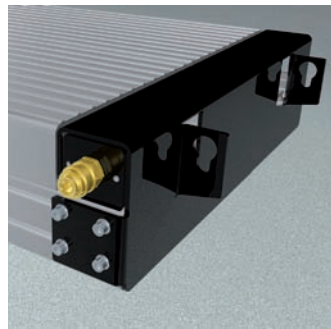
Drive on ramp  
for floor incumbent installation  
1250 mm, hanging, bevel 7°  
102347



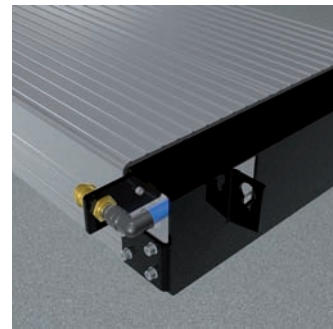
Drive on stop  
102349



Axle lifter  
pneumatic, without slide rails  
2600 kg  
105063



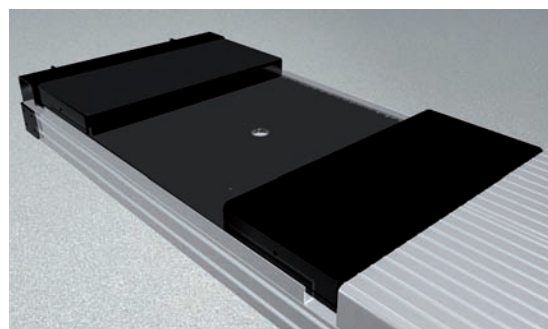
Compressed  
air supply  
for floor incumbent installation  
or rectangular foundation  
102407



Compressed  
air supply  
for installation flush with  
floor level in H-frame  
105617

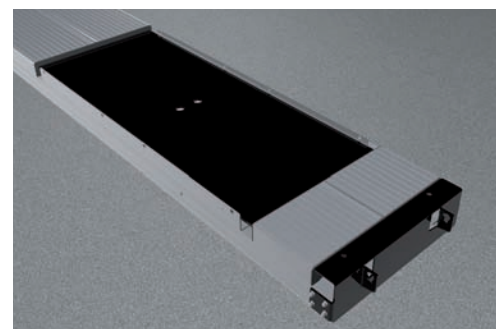


Slide rail set  
4800mm  
102375

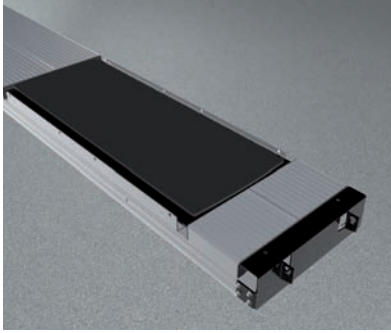


Platform support with platform notches for turn tables and  
for sliding plates incl. levelling plates

Alu Track 4.40/2.35  
1000 mm/1400 mm  
108368

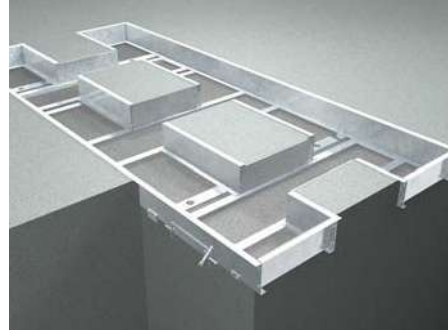


# Accessories



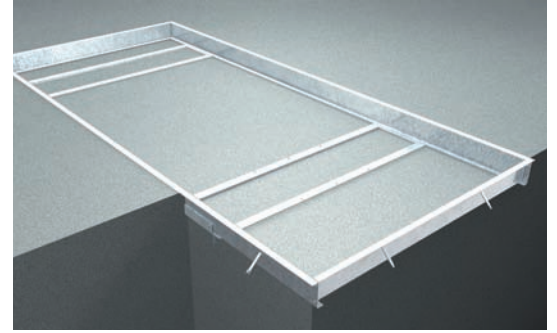
Sliding plate  
Precision

1400 mm  
102424



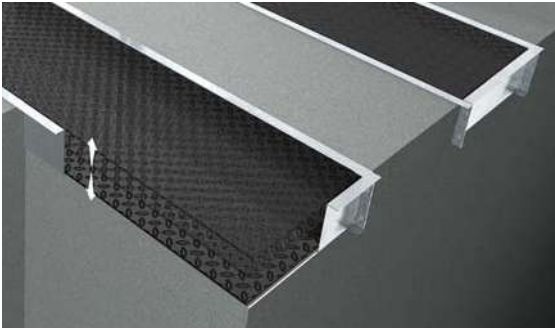
Surround frame 6-piston  
hot-dip galvanized,  
for installation flush with floor level

4800 mm  
108625



Surround frame rectangle  
hot-dip galvanized,  
for installation flush with floor level

6-pt. 4800 mm  
108626



Automatic  
floor levelling system  
hot-dip galvanized and powder-coated

6pt. 4800 mm  
108627



Automatic lubrication

basic unit 6-piston  
108708



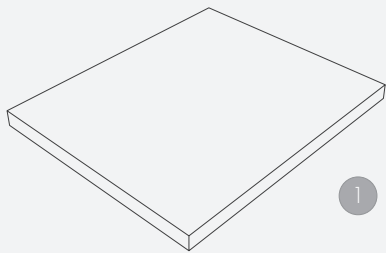
Park position sensor for  
pneumatic axle lifter

102456

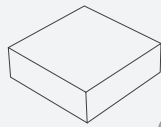


Illumination set LED  
Alu Track

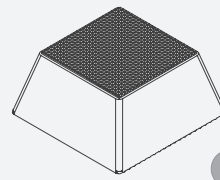
102394



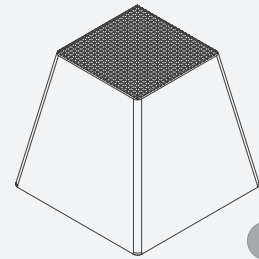
1 | Rubber pad  
290 x 335 x 20 mm  
102275 (1set / 4 pcs.)



2 | Rubber pad  
120 x 120 x 40 mm  
102274 (1set / 4 pcs.)



3 | Rubber pad pyramid  
70 mm  
102273 (1set / 4 pcs.)



4 | Rubber pad pyramid  
140 mm  
102291 (1set / 4 pcs.)

**Herrmann AG**  
Bahnhofstrasse 32  
D-93483 Pöding

**Sales**

Phone: +49 (0)9461/91388 50  
Fax: +49 (0)9461/91388 33  
E-Mail: [sales@herrmann.de](mailto:sales@herrmann.de)

**Service**

Phone: +49 (0)9461/91388 31  
Fax: +49 (0)9461/91388 33  
E-Mail: [service@herrmann.de](mailto:service@herrmann.de)

[www.herrmann.de](http://www.herrmann.de)