

JACKING BEAMS

SD20L / SD26L



Capacity: 2,0 / 2,6 t
Stroke: 250 mm

Hand hydraulic jacking beam for passenger cars and vans

Quick and efficient lifting due to manual double acting pump

Low closed height of only 180 mm makes it suitable for vehicles with a low clearance

Flexible top support beam can be extended up to 1610 mm

Unique height adjustable support arm system – designed to fit all current lifts and pits

Request list/fill out spec. form p.64/65

Two-hand lowering operation with dead man's release, automatic safety locking device and overload valve for optimum safety

Supplied with 3 extension sets (10/40/85 mm) and rubber cushion for protection of car body



SD20PHL / SD26PHL



Capacity: 2,0 / 2,6 t
Stroke: 250 mm

Air hydraulic jacking beam for passenger cars and vans

Quick and efficient lifting due to reliable and noiseless pump

Low closed height of only 180 mm makes it suitable for vehicles with a low clearance

Flexible top support beam can be extended up to 1610 mm

Unique height adjustable support arm system – designed to fit all current lifts and pits

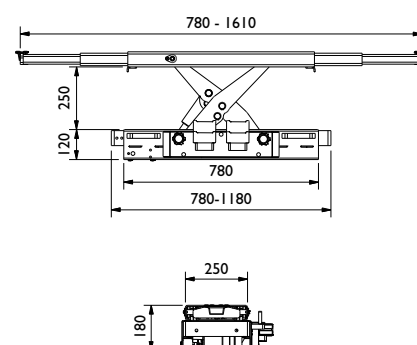
Request list/fill out spec. form p.64/65

Two-hand lowering operation with dead man's release, automatic safety locking device and overload valve for optimum safety

Supplied with 3 extension sets (10/40/85 mm) and rubber cushion for protection of car body



	SD20L	SD26L	SD20PHL	SD26PHL
Capacity	2,0 t	2,6 t	2,0 t	2,6 t
Stroke	250 mm	250 mm	250 mm	250 mm
Min. height	180 mm	180 mm	180 mm	180 mm
Telescopic arms	780 - 1610 mm	780 - 1610 mm	780 - 1610 mm	780 - 1610 mm
Width (+ support arms)	780 - 1180 mm	780 - 1180 mm	780 - 1180 mm	780 - 1180 mm
Lifting frame (height)	120 mm	120 mm	120 mm	120 mm
Lifting frame (depth)	250 mm	250 mm	250 mm	250 mm
Air supply			6 - 10 bar	6 - 10 bar
Air consumption			400 - 700 l/min	400 - 700 l/min
Weight (+ support arms)	105 kg	105 kg	110 kg	110 kg



JACKING BEAMS

SD20PHL-A / SD26PHL-A



Capacity: 2,0 / 2,6 t
Stroke: 250 mm

Automatic air hydraulic jacking beam for inspections centres and workshops with many lifting operations

Individual joysticks control of lifting arms to avoid time consuming working operations

Remote control activates lowering and retraction of lifting arms to closed position

Placing the remote control next to the lift control panel ensures safe operation and prevents unnecessary steps

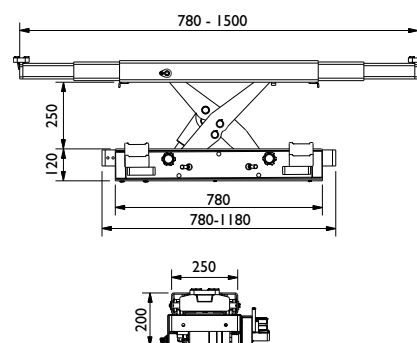
Unique height adjustable support arm system – designed to fit all current lifts and pits

Request list/fill out spec. form p.64/65

Supplied with 3 extension sets (10/40/85 mm) and rubber cushion



	SD20PHL-A	SD26PHL-A
Capacity	2,0 t	2,6 t
Stroke	250 mm	250 mm
Min. height	200 mm	200 mm
Telescopic arms	780 - 1500 mm	780 - 1500 mm
Width (without support arms)	780 - 1180 mm	780 - 1180 mm
Lifting frame (height)	120 mm	120 mm
Lifting frame (depth)	250 mm	250 mm
Air supply	6 - 10 bar	6 - 10 bar
Air consumption	400 - 700 l/min	400 - 700 l/min
Weight (without support arms)	120 kg	120 kg



JACKING BEAMS

SD32PHL



Capacity: 3,2 t
Stroke: 250 mm

Air hydraulic jacking beam for passenger cars, vans and trucks

Strong and robust design makes it ideal for lifting heavy vehicles

Low closed height of only 230 mm

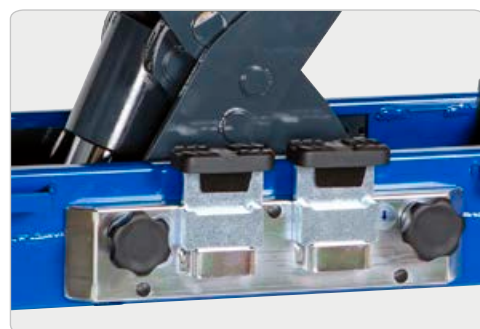
Flexible top support beam can be extended up to 1610 mm

Unique height adjustable support arm system – designed to fit all current lifts and pits

Request list/fill out spec. form p.64/65

Two-hand lowering operation with dead man's release, automatic safety locking device and overload valve for optimum safety

Supplied with 3 extension sets (10/40/85 mm) and rubber cushion



SD40PHL



Capacity: 4,0 t
Stroke: 250 mm

Air hydraulic jacking beam for passenger cars, vans and trucks

Strong and robust design makes it ideal for lifting heavy vehicles

Low closed height of only 230 mm

Flexible top support beam can be extended up to 1500 mm

Unique height adjustable support arm system – designed to fit all current lifts and pits

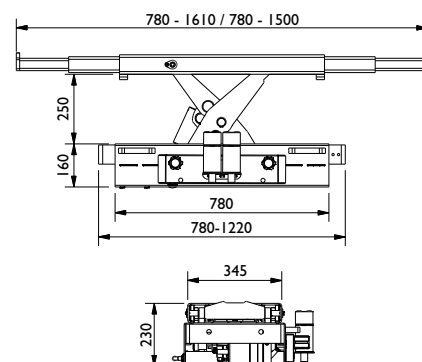
Request list/fill out spec. form p.64/65

Two-hand lowering operation with dead man's release, automatic safety locking device and overload valve for optimum safety

Supplied with 2 extension sets (50/100 mm)



	SD32PHL	SD40PHL
Capacity	3,2 t	4,0 t
Stroke	250 mm	250 mm
Min. height	230 mm	230 mm
Telescopic arms	780 - 1610 mm	780 - 1500 mm
Width (without support arms)	780 - 1220 mm	780 - 1220 mm
Lifting frame (height)	160 mm	160 mm
Lifting frame (depth)	345 mm	345 mm
Air supply	6 - 10 bar	6 - 10 bar
Air consumption	400 - 700 l/min	400 - 700 l/min
Weight (without support arms)	175 kg	175 kg





OPTION - JACKING BEAMS

HSD / HSD-A



Air-line connection - HSD

Set for jacking beam

Fits:
SD20PHL
SD26PHL
SD32PHL
SD40PHL

Air-line connection - HSD-A

Set for automatic jacking beam

Fits:
SD20PHL-A
SD26PHL-A



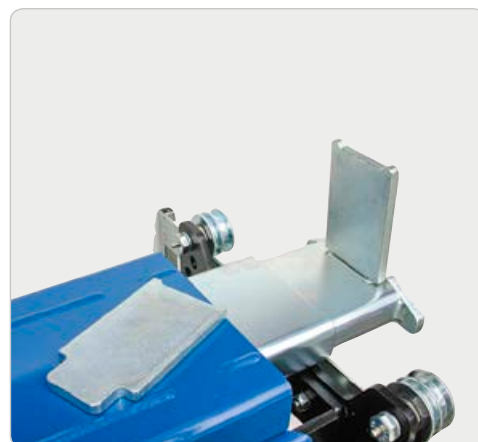
FSD I



Extension

Increases the lifting height by
130 mm
(Order 2 units)

Fits:
SD20L
SD26L
SD20PHL
SD26PHL
SD32PHL
SD20PHL-A
SD26PHL-A



FSD2 / FSD3



Rubber support - FSD2

Block for protection of car body
(40 mm)
(Order 2 units)

Fits:
All jacking beams

Rubber support - FSD3

Block for protection of car body
(80 mm)
(Order 2 units)

Fits:
All jacking beams



FSD5



Capacity: 2,0 t

Saddle with spindle

Increases the lifting height by 106-
235 mm.
(Order 2 units)

Fits:
SD20L
SD26L
SD20PHL
SD26PHL
SD20PHL-A
SD26PHL-A





OPTION - JACKING BEAMS

FSD6 / FSD7



Capacity: 2,0 t

Adjustable saddle - FSD6

Increases the lifting height by 32-92 mm
(Order 2 units)

Extension - FSD7

For FSD6 increases the lifting height by 60 mm
(Order 2 units)

Fits:
SD20L / SD26L
SD20PHL / SD26PHL
SD32PHL



GS1



Rubber cushion

Can be used in combination with FSD5 and FSD6

For protection of car body
(Order 2 units)

Fits:
FSD5
FSD6



GS2



Rubber cushion

Rubber cushion for 10 mm standard extension
(Order 2 units)

Fits:
SD20L
SD26L
SD20PHL
SD26PHL
SD32PHL
SD20PHL-A
SD26PHL-A



FW / FWI



Saddle - FW

Suitable for lifting over drain plugs, differential gear etc.
(Ø 145 mm)
(Order 2 units)

V-saddle - FWI

For lifting under various axles
(Order 2 units)

Fits:
SD40PHL





HEAVY DUTY JACKING BEAMS FOR LIFTS

FL60-I / FL120-I FL160-I / FL200-I



Capacity: 6 / 12 / 16 / 20 t
Stroke: 200 mm

Standard air hydraulic single ram jacking beam

Rapid and precise air hydraulic unit with high speed ram travel

Simple modern design with control panel at ergonomic working height

Can be made to fit all lifts due to its adjustable frame¹

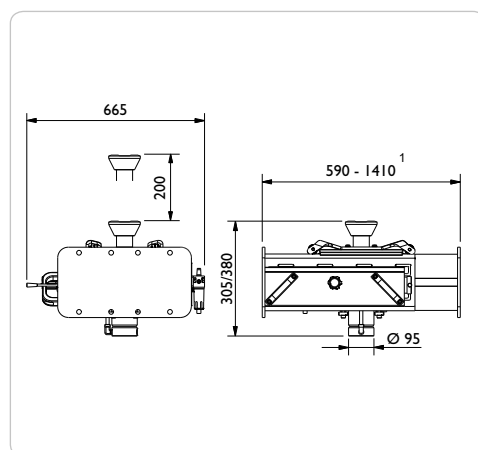
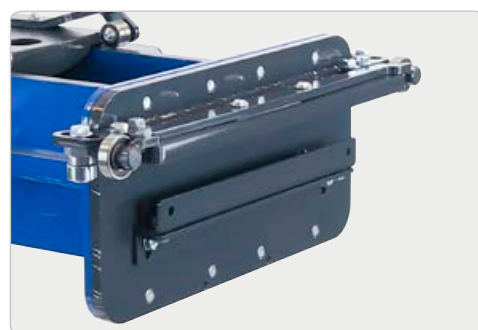
Frame height is adjusted and set to the customers individual specifications

Transversely sliding ram

Dead man's release and safety overload valve for optimum safety

Supplied with 1 x 100 mm extension

When ordering fill out spec. form (page 64)



	FL60-I	FL120-I	FL160-I	FL200-I
Capacity	6 t	12 t	16 t	20 t
Stroke	200 mm	200 mm	200 mm	200 mm
Min. height	305 mm	380 mm	380 mm	380 mm
Max. height	505 mm	580 mm	580 mm	580 mm
Width ¹	590-1410 mm	590-1410 mm	590-1410 mm	590-1410 mm
Depth	665 mm	665 mm	665 mm	665 mm
Air supply	8 - 12 bar	8 - 12 bar	8 - 12 bar	8 - 12 bar
Air consumption	350 l/min	350 l/min	350 l/min	350 l/min
Weight	200 kg	200 kg	200 kg	200 kg

¹ Framewidth: 590-890 mm / 850-1150 mm / 1110-1410 mm

- The capacity of the jacking beam cannot exceed 0,66 x the lift capacity



HEAVY DUTY JACKING BEAMS FOR LIFTS

FL60-2 / FL120-2 FL160-2 / FL200-2



Capacity: 6 / 12 / 16 / 20 t
Stroke: 200 mm

Air hydraulic twin ram jacking beam

2 individually controlled rams offer safe and balanced lifting

Transversely sliding rams

Rapid and precise air hydraulic unit with high speed ram travel

Simple modern design with control panel at ergonomical working height

Can be made to fit all lifts due to its adjustable frame¹

Frame height is adjusted and set to the customers individual specifications

Dead man's release and safety overload valve for optimum safety

Supplied with 2 x 100mm extensions

When ordering fill out spec. form (page 64)



FL60-2M / FL120-2M FL160-2M / FL200-2M



Capacity: 6 / 12 / 16 / 20 t
Stroke: 200 mm

Air hydraulic twin ram jacking beam, with an automatic mechanical safety lock

2 individually controlled rams offer safe and balanced lifting

The mechanical safety locks offers maximum operator safety against unintentional lowering

Transversely sliding rams

Rapid and precise air hydraulic unit with high speed ram travel

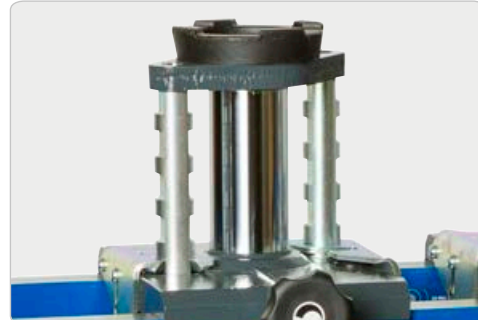
Simple modern design with control panel at ergonomical working height

Can be made to fit all lifts due to its adjustable frame¹

Dead man's release and safety overload valve for optimum safety

Supplied with 2 x 100mm extensions

When ordering fill out spec. form (page 64)

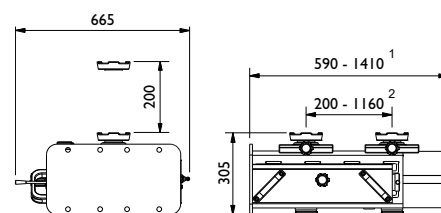


	FL60-2 FL60-2M	FL120-2 FL120-2M	FL160-2 FL160-2M	FL200-2 FL200-2M
Capacity	6 t	12 t	16 t	20 t
Stroke	200 mm	200 mm	200 mm	200 mm
Min. height	305 mm	305 mm	305 mm	305 mm
Max. height	505 mm	505 mm	505 mm	505 mm
Width ¹	590-1410 mm	590-1410 mm	590-1410 mm	590-1410 mm
Depth	665 mm	665 mm	665 mm	665 mm
Lifting points ²	200-1160 mm	200-1160 mm	200-1160 mm	200-1160 mm
Air supply	8 - 12 bar	8 - 12 bar	8 - 12 bar	8 - 12 bar
Air consumption	350 l/min	350 l/min	350 l/min	350 l/min
Weight	202 kg	202 kg	202 kg	202 kg

¹ Framewidth: 590-890 mm / 850-1150 mm / 1110-1410 mm

² Distance between lifting points: 200-640 mm / 200-990 mm / 200-1160 mm

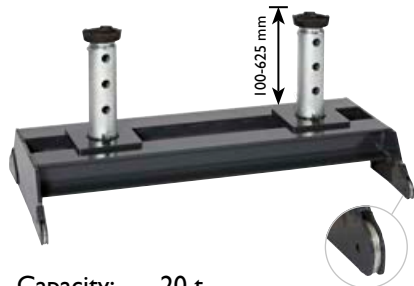
- The capacity of the jacking beam cannot exceed 0,66 x the lift capacity





OPTION – HEAVY DUTY JACKING BEAMS & PIT JACKS

AB



Capacity: 20 t

Support bridge

For safe and stable support of the vehicle

The open frame offers optimum traversing cylinder mobility

With leaf spring wheels for easy transport along the pit

Usable with various extensions and saddles: FG100, FG200, FW2 and US

When ordering fill out spec. form (page 65)



ABT



Capacity: 15 t

Telescopic support bridge

Flexible support bridge can be used in different pits because of the adjustable width

Opening in the middle for optimum flexibility when manoeuvring the jack

With leaf spring wheels for easy transport along the pit

Usable with various extensions and saddles: FG100, FG200, FW2 and US

When ordering fill out spec. form (page 65)



S200



Capacity: 20 t

Integrated safety stand

Mechanical locking of the load prevents unintended lowering

Adjustable in 6 positions

Increases the minimum height of the pit jack by 65 mm

Fits:
GD100-I / GD150-I / GD200-I



AS3



Capacity: 1 t
Dimension: 540x385x110 mm

Gearbox saddle

10° tilt in all directions for accurate dismantling and re-mounting of gearboxes

Low minimum height for wide range of applications

Fitted with 2 straps and 4 rubber cushions with magnets

Weight: 24 kg

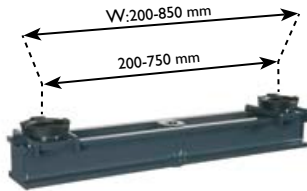
Fits:
GDxxx-I / GDT150-I
GGD150F / GGD150U / GGD150S





OPTION – HEAVY DUTY JACKING BEAMS & PIT JACKS

T4-I / T4-2 / T4-IW / T4-2W



Capacity: 20 t
 Length:
 T4-I / T4-2 920 mm
 T4-IW / T4-2W 1020 mm

Cross beam adaptor

Ideal for supporting axle, whilst allowing work to be done on the differential gear

Offers increased safety – divides the load over 2 lifting points

Usable with various extensions and saddles: FG100, FG200, FW2, US

T4-I/W Increases min. height by 100 mm
 T4-2/W Increases min. height by 145 mm

Fits:
 All models ÷ FLxx-I



T5-I / T5-2



Capacity: 15-11,5 t
 Length: 1060-1635 mm

Flexible cross beam adaptor with extra long reach

Ideal for supporting axle, whilst allowing work to be done on the differential gear

Offers increased safety – divides the load over 2 lifting points

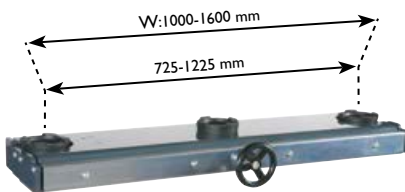
Usable with various extensions and saddles: FG100, FG200, FW2, US

T5-I Increases min. height by 95 mm
 T5-2 Increases min. height by 140 mm

Fits:
 All models ÷ FLxx-I



T6-I / T6-2 / T6-IW / T6-2W



Capacity: 13 t
 Length:
 T6-I / T6-2 850-1350 mm
 T6-IW / T6-2W 1120-1720 mm

Cross beam adaptor

Hand wheel on the cross beam for easy and precise adjustment of lifting saddles without moving from the pit – ideal for inspection centres

Usable with various extensions and saddles: FG100, FG200, FW2, US

T6-I/W Increases min. height by 55 mm
 T6-2/W Increases min. height by 90 mm

Fits:
 All models ÷ FLxx-I



LB



Capacity: 20 t

Diff beam

Allows use of both rams to lift at one point

Fits:
 FL60-2 / FL120-2
 FL160-2 / FL200-2
 FL60-2M / FL120-2M
 FL160-2M / FL200-2M
 GD100-2 / GD150-2 / GD200-2
 GD100-2M / GD150-2M / GD200-2M





OPTION – HEAVY DUTY JACKING BEAMS & PIT JACKS

FLTR



Trolley

Practical trolley – designed for mounting and dismounting of heavy duty jacking beams on lifts

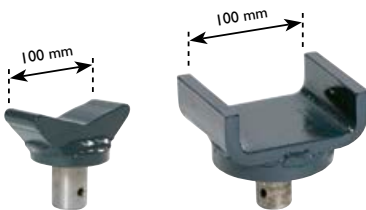
Fitted with revolving wheels for easy manoeuvrability

Fits:

FL60-1 / FL120-1
FL160-1 / FL200-1
FL60-2 / FL120-2
FL160-2 / FL200-2



FW2 / US



Capacity: 10 t

V-saddle - FW2

Suitable for lifting under various axles

U-saddle - US

Suitable for lifting various chassis profiles

Fits:

All models



FG100 / FG200



Capacity: 10 t

Extension - FG100

Increases the lifting height by 100 mm

Extension - FG200

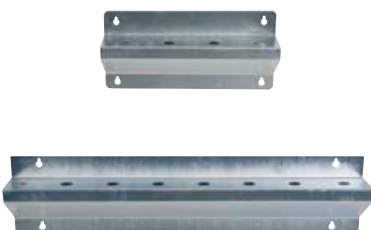
Increases the lifting height by 200 mm

Fits:

FL60-2 / FL120-2
FL160-2 / FL200-2
GD100-1 / GD150-1 / GD200-1
GD100-2 / GD150-2 / GD200-2



VB1 / VB2



Wall bracket - VB1

Robust wall bracket for storage of extensions and saddles (4 pcs.)

Wall bracket - VB2

Robust wall bracket for storage of extensions and saddles (8 pcs.)





OPTION – HEAVY DUTY JACKING BEAMS & PIT JACKS

GR



Handle

Extra handle makes it easier to push the jacking beam or pit jack in a wide pit

Fits:
FL All models
GD All models
GDT

